



Laebanistería
be at home, since 1968

www.laebanisteria.com

www.grupografico.es Foto: technology: www.3drender.es



Laebanistería
be at home, since 1968

PLUIE DE COULEURS



Laebanistería
be at home, since 1968

PLUIE
DE
COU
LEURS

PLUIE
DE
COU
LEURS

Diseño y desarrollo del producto:
LA EBANISTERIA

photo_technology
www.3drender.es

Diseño de catálogo,
fotomecánica e impresión:
GRUPO GRÁFICO

Colours and shades as shown in the
photographs of this catalogue are for
indication only. The manufacturer reserves
the right to modify any model shown in this
catalogue without prior notice.

Los tonos y colores de las fotografía de
éste catálogo son una referencia a los
modelos reales. La ebanisteria se reserva
el derecho a modificar cualquier modelo de
éste catálogo sin previo aviso.

Le tonalità e i colori delle fotografie del
presente catalogo fanno riferimento ai
modelli reali. L'ebanisteria si riserva il
diritto di modificare qualsiasi modello del
catalogo senza previo avviso.

Color Glossary

Basic concepts

01 Neutral colour



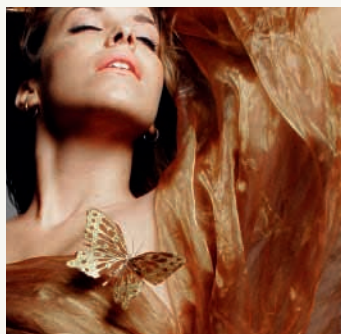
Basically, this is where you should put the bulk of your clothing budget, as they will last a long time and are timeless in sense of fashion.

02 Cool colours

You will need some contrast between colours to enhance your look. Avoid yellow and golden based colours unless you balance them with cool shades and tones.



03 Warm colours



Warm tones look beautiful in “earthy” shades like burnt orange, cream, saturated sunny yellow, brown, dark leafy green, and that shade of red maple leaves turn when autumn comes your way.

04 Monochromatic colours

MONOCHROME creations are genderless, singular and timeless, coming from nowhere but made to wear anywhere and by anyone.



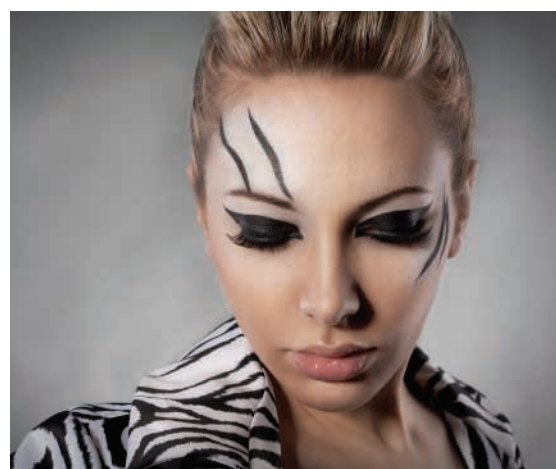
THE KERALA RED RAIN PHENOMENON WAS A RED RAIN EVENT THAT OCCURRED FROM 25 JULY TO 23 SEPTEMBER 2001, WHEN HEAVY DOWNPOURS OF RED-COLOURED RAIN FELL SPORADICALLY ON THE SOUTHERN INDIAN STATE OF KERALA, STAINING CLOTHES PINK. YELLOW, GREEN, AND BLACK RAIN WAS ALSO REPORTED. COLOURED RAIN WAS ALSO REPORTED IN KERALA IN 1896 AND SEVERAL TIMES SINCE, MOST RECENTLY IN JUNE 2012. THE RAIN WAS CAUSED BY AREAL SPORES OF MICROALGAE TRENTETOPHIA ANNULATA.



Following a light microscopy examination, it was initially thought that the rains were coloured by fallout from a hypothetical meteor burst, but a study commissioned by the Government of India concluded that the rains had been coloured by airborne spores from locally prolific terrestrial algae.

It was not until early 2006 that the coloured rains of Kerala gained widespread attention when the popular media reported that Godfrey Louis and Santhosh Kumar of the Mahatma Gandhi University in Kottayam proposed a controversial argument that the coloured particles were extraterrestrial cells. Red rains were also reported from 15 November 2012 to 27 December 2012 occasionally in eastern and north-central provinces of Sri Lanka, where scientists from the Sri Lanka Medical Research Institute (MRI) are investigating to ascertain their cause.[12][13][14]

THERE ARE THREE SPECIES OF ZEBRAS: THE PLAINS ZEBRA, THE GRÉVY'S ZEBRA AND THE MOUNTAIN ZEBRA. THE PLAINS ZEBRA AND THE MOUNTAIN ZEBRA BELONG TO THE SUBGENUS HIPBOTIGRIS, BUT GRÉVY'S ZEBRA IS THE SOLE SPECIES OF SUBGENUS DOLICHOHIPPIUS. THE LATTER RESEMBLES AN ASS, TO WHICH IT IS CLOSELY RELATED, WHILE THE FORMER TWO ARE MORE HORSE-LIKE. ALL THREE BELONG TO THE GENUS EQUUS, ALONG WITH OTHER LIVING EQUIDS.



The unique stripes of zebras make them one of the animals most familiar to people. They occur in a variety of habitats, such as grasslands, savannas, woodlands, thorny scrublands, mountains, and coastal hills. However, various anthropogenic factors have had a severe impact on zebra populations, in particular hunting for skins and habitat destruction. Grévy's zebra and the mountain zebra are endangered. While plains zebras are much more plentiful, one subspecies, the quagga, became extinct in the late 19th century – though there is currently a plan, called the Quagga Project, that aims to breed zebras that are phenotypically similar to the quagga in a process called breeding back.





IN ALL THINGS OF NATURE
THERE IS SOMETHING OF THE
MARVELOUS

Animal print is a clothing and fashion style in which the garment is made to resemble the pattern of the skin and fur of an animal such as a Leopard, Cheetah, Zebra, Tiger, Spotted Hyena, Striped Hyena, African Wild Dog, Giraffe or monkey. Animal print is also used for room decoration, handbags and footwear and even some jewelry. [1] A major difference between animal prints and fur clothing is that animal prints today very often use fake fur instead of animal coat.



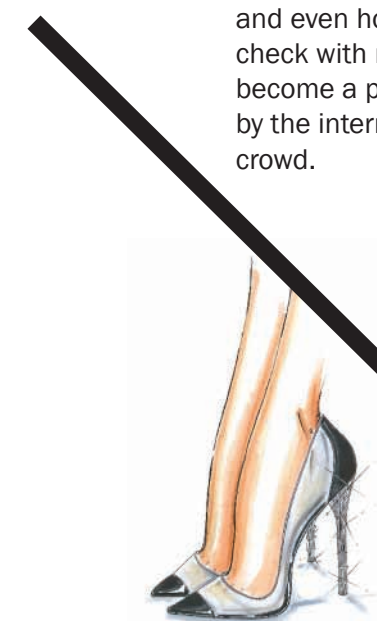
God is in
the details.





AN UNDYING PRINT

Houndstooth has come quite a long way from its early beginnings on the backs of shepherders. In 2003, Japanese designer Yohji Yamamoto created his entire fall collection – from oversized coats to chiffon ball gowns – with houndstooth in the design. 2009 saw houndstooth featured in almost every major international runway show, from British designer Alexander McQueen to the Italian brand Moschino. Moving beyond apparel and outerwear, houndstooth has found its way into hats, shoes and even home accessories. The check with modest origins has become a pattern wildly adored by the international fashion crowd.



Do you have this one in pink?

Fashion forms a key part of many of our important industries, especially those involving design, such as cars, computer printers and clothing. In the world of machines, changes in design often accompany technical improvements.

However, new design in clothing is more commonly motivated by fashion. Differences in the climate from season to season and the tendency to equate each new year with a new look provide textiles companies with frequent opportunities to renew their sales.

These marketing opportunities are often realised by associating products with people. Fashion models are highly paid to provide appropriate images of good health, comfortable life-styles, success and beauty.







FORGET THE MATCHY-MATCHY LOOK. DECORATING A ROOM WITH DIFFERENT FURNITURE STYLES, COLORS, AND PATTERNS IS FASHIONABLE AND FRESH — BUT IT CAN ALSO BE HARD TO PULL OFF. HERE ARE EASY EXPERT TRICKS FOR MIXING ANTIQUE, MODERN, AND TRADITIONAL DESIGN SO THAT YOUR SPACE LOOKS CONSIDERED INSTEAD OF CHAOTIC.



BEOL

This season there is a move toward the cooler and softer side of the color spectrum. An eclectic, ethereal mix of understated brights, pale pastels and nature-like neutrals take center stage as designers draw from daydreams of simpler times. Remembrances of retro delights, folkloric and floral art, and the magical worlds of tropical landscapes restore a sense of well-being as we head into warmer months.



TRIANGLE BEOL

Sideboard / Aparador / Credenza

Bianco Piano & Azul Spring Piano







TRIANGLE COCÓ

Sideboard / Contenedor / Mobile contenitore

Azul Spring Piano & Nómada Piano

TRIANGLE COCÓ

Sideboard / Aparador / Credenza

Nómada Piano & Azul Spring Piano



Composition / Composición / Composizione

Nómada mate & Azul Spring mate

Luxury must be comfortable, otherwise it is not luxury

LUXURY CAN BE A DIVISIVE WORD. TRADITIONALLY, A LUXURY DENOTES SOMETHING THAT IS ENJOYED BY CERTAIN PEOPLE AND NOT BY OTHERS. IT SPEAKS OF THE PRIVILEGE AND EXCLUSIVITY ENJOYED BY AN ELITE AND UNATTAINABLE FEW. HAVING NOT PERSONALLY INHERITED A MEMBERSHIP CARD TO SOCIETY, I FIND THIS CONCEPT TO BE INCREDIBLY BORING. I KNOW I AM NOT THE ONLY ONE.

There is a new approach to the idea of luxury growing specifically within our generation that puts the subject in an entirely different (and perhaps to older generations an alarmingly inclusive) light. It is not that we no longer want nice things—instead, we are beginning to realize that the existing definition of luxury is too simple.

We seem to be shifting our sights from acquiring things to acquiring experiences. Our luxury is focused less on the infamous Jones's and more on our personal quality of life. We are not content to take up space and to buy what is sold to us—we have the need to see things, to understand art, and to drink deeply of the incredible beauty that technology has shown us exists outside of our home sphere. Not only are we exponentially more aware of the value of quality, craftsmanship and culture, but we also have more access to these things than ever before.



ATLANTIC

Sofa / Sofá / Divano

MUSCARY

Bookcase / Biblioteca / Librerie

Azul Noche mate





Touch it,
feel it.





TRIANGLE	Sideboard / Aparador / Credenza	Nómada mate & Nómada Piano	TRIANGLE BEOL	Sideboards / Contenedores / Mobili contenitori	Nómada mate & Azul Spring Piano	OPALO	Chairs / Sillas / Sedie	Nómada mate	BELT	Dining table / Mesa de comedor / Tavolo da pranzo	Piel Nómada & Nómada mate	ANGULAR	Mirrors / Espejos / Specchi	Pan de Oro	AGORA	Console / Consola / Consolle	Piel Azul Noche & Azul Noche Piano
----------	---------------------------------	----------------------------	---------------	--	---------------------------------	-------	-------------------------	-------------	------	---	---------------------------	---------	-----------------------------	------------	-------	------------------------------	------------------------------------

Beauty is
the quality of
harmonious
relationships.





No pattern should be without some sort of meaning.



TRIANGLE

Sideboard / Aparador / Credenza

Nómada mate & Nómada Piano



MOMENTUM

Armchair / Butaca / Poltrona

Cabinet / Vitrina / Vetrina

Adara mate & Piel Adara



A GIRL SHOULD BE TWO THINGS: CLASSY AND FABULOUS.



HOUNDSTOOTH, HOUNDS TOOTH CHECK OR HOUND'S TOOTH (AND SIMILAR SPELLINGS), ALSO KNOWN AS DOGSTOOTH, DOGTUOTH OR DOG'S TOOTH, IS A DUOTONE TEXTILE PATTERN CHARACTERIZED BY BROKEN CHECKS OR ABSTRACT FOUR-POINTED SHAPES, OFTEN IN BLACK AND WHITE, ALTHOUGH OTHER COLOURS ARE USED. THE CLASSIC HOUNDSTOOTH PATTERN IS AN EXAMPLE OF A TESSELLATION.

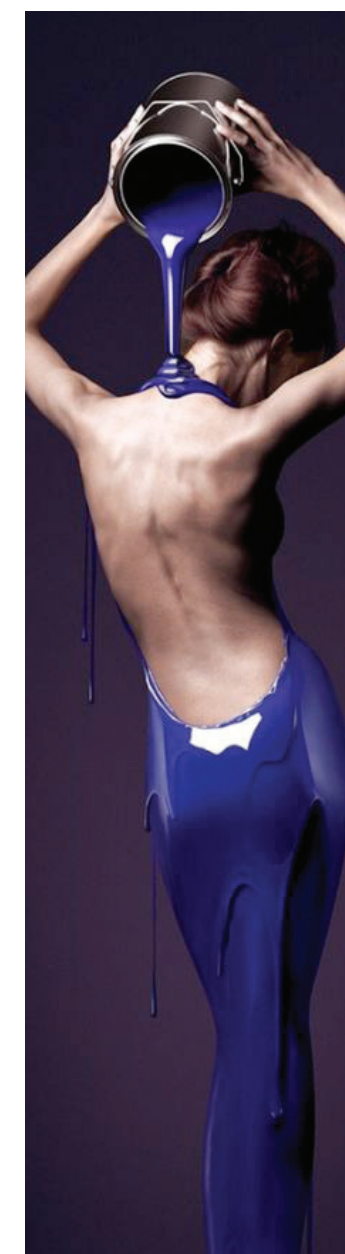


A smaller scale version of the pattern can be referred to as puppytooth. Houndstooth checks originated in woven wool cloth of the Scottish Lowlands, but are now used in many other materials. The traditional houndstooth check is made with alternating bands of four dark and four light threads in both warp and weft/filling woven in a simple 2:2 twill, two over/two under the warp, advancing one thread each pass. In an early reference to houndstooth, De Pinna, a New York City-based men's and women's high-end clothier founded in 1885, included houndstooth checks along with gun club checks and Scotch plaids as part of its 1933 spring men's suits collection.



Never throw away
your blue jeans.

Detail hexagonal handle
Detalle tirador hexagonal
Dettaglio maniglia esagonale





Leather is
not only for
your jacket.



DOUBLE

Coffee table / Mesa de centro / Tavolo centrale

Piel Bombón & Brownie Piano



CAPITONÉ

TV Composition / Composición TV / Composizione TV

Cappuccino Piano, Brownie Piano & Champagne



CAPITONÉ

Sideboard / Contenedor / Mobile contenitore

Nómada Piano, Adara Piano & Pan de Oro



MOMENTUM

Armchair / Butaca / Poltrona

MIRAGE

Sideboard / Contenedor / Mobile contenitore

Nómada Piano, Adara Piano & Pan de Oro

Life is too short
to wear boring
clothes.



Sideboard / Contenedor / Mobile contenitore

Adara Piano & Nómada Piano - Little mouldings Rojo Piano & Berenjena Piano



MIRAGE

Sideboard / Aparador / Credenza

Nómada Piano & Adara Piano - Little mouldings Berenjena Piano & Brownie Piano





KUBUS
Room divider / Separador de ambientes / Interpretare a vista

ATLANTIC
Sofas / Sofás / Divani

NEUTRIA
Corner table / Mesa de rincón / Tavolo angolare
Brownie Piano

OPALO
Dining table / Mesa de comedor / Tavolo da pranzo

Adara mate

AMARANDA
Chairs / Sillas / Sedie
Adara mate



Triangle

Good dressing
is largely a question of
detail and accessories.





The most
important is
always inside.

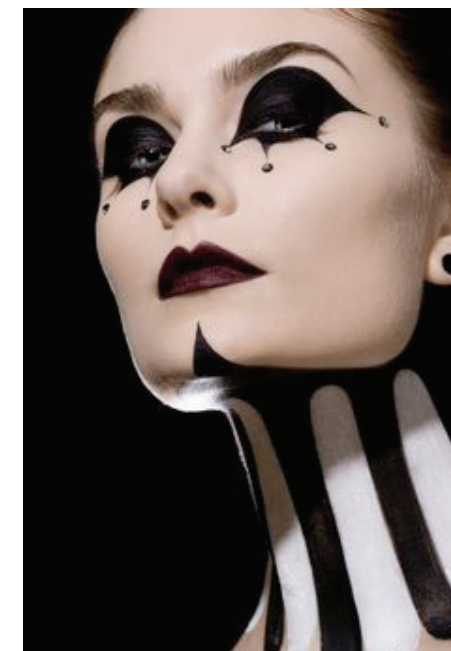


Beauty is in
the eye
of the
beholder.

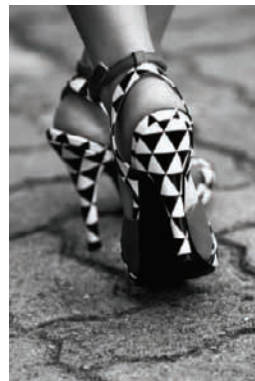




I never met a color
I didn't like



Life is too
short to be
boring.



HARLEQUIN, IN ITALIAN “ARLECCHINO”, IN FRENCH “ARLEQUÍN”, IS THE BEST-KNOWN OF THE ZANNI OR COMIC SERVANT CHARACTERS FROM THE ITALIAN COMMEDIA DELL'ARTE. TRADITIONALLY BELIEVED TO HAVE BEEN INTRODUCED BY ZAN GANASSA IN THE LATE 16TH CENTURY, THE ROLE WAS DEFINITELY POPULARIZED BY THE ITALIAN ACTOR TRISTANO MARTINELLI IN PARIS IN 1584–1585 AND BECAME A STOCK CHARACTER AFTER MARTINELLI'S DEATH IN 1630.



The Harlequin is characterized by his chequered costume. His role is that of a light-hearted, nimble and astute servant, often acting to thwart the plans of his master, and pursuing his own love interest, Colombina, with wit and resourcefulness, often competing with the sterner and melancholic Pierrot. He later develops into a prototype of the romantic hero. Harlequin inherits his physical agility and his trickster qualities, as well as his name, from a mischievous “devil” character in medieval passion plays.



Take a walk on the wild side



ANIMAL PRINT NEVER GOES OUT OF FASHION. IN FACT, EVERY SEASON AND EVERY YEAR, PEOPLE PARROT, "ANIMAL PRINT IS ON TREND!" BUT IT'S THE SAME PRINT. IF THERE'S ANYTHING NEW, IT'S PURELY A MATTER OF INTERPRETATION.

The question isn't about "should you" or "should you not" own an animal print. Every fashionista must own at least a piece of this print be it a dress, a top, a pair of shoes, a scarf or a bag. The question therefore is – how do you make it right?



Matching colors and prints is very common in styling. However, not only does going too matchy creates a trying hard kind'a obsolete way of styling, it's considered a big NAY when it comes to animal prints.

Choose only one large part of your outfit that's wild. For instance, if your top is a leopard/ tiger/zebra print, let the tights/skirt/pants be non-animal. If it's your dress that has the print, then let your shoes be plain black or nude.



THE FOUNDATIONS OF PRE-20TH-CENTURY COLOR THEORY WERE BUILT AROUND “PURE” OR IDEAL COLORS, CHARACTERIZED BY SENSORY EXPERIENCES RATHER THAN ATTRIBUTES OF THE PHYSICAL WORLD. THIS HAS LED TO A NUMBER OF INACCURACIES IN TRADITIONAL COLOR THEORY PRINCIPLES THAT ARE NOT ALWAYS REMEDIED IN MODERN FORMULATIONS.

The most important problem has been a confusion between the behavior of light mixtures, called additive color, and the behavior of paint, ink, dye, or pigment mixtures, called subtractive color. This problem arises because the absorption of light by material substances follows different rules from the perception of light by the eye.



Buy the best, and you only cry once.

A second problem has been the failure to describe the very important effects of strong luminance (lightness) contrasts in the appearance of colors reflected from a surface (such as paints or inks) as opposed to colors of light; “colors” such as browns or ochres cannot appear in mixtures of light. Thus, a strong lightness contrast between a mid-valued yellow paint and a surrounding bright white makes the yellow appear to be green or brown, while a strong brightness contrast between a rainbow and the surrounding sky makes the yellow in a rainbow appear to be a fainter yellow, or white.





ZEBRA

Sideboard / Aparador / Credenza

Negro Piano & Blanco Piano

ANGULAR

Mirrors / Espejos / Specchi

Pan de Oro

OPERA

Desk / Mesa despacho / Tavolo da ufficio

Negro mate

NEUTRIA

Console / Consola / Console

Azul Noche mate

WHAT TO WEAR TENDS TO BE ONE THE MOST POPULAR TOPICS ON THIS SITE. PROBABLY BECAUSE IT CAN TOUGH FOR INTERNS AND OTHER NEWCOMERS TO DETERMINE WHAT TO WEAR IN AN INDUSTRY THAT'S A MIX BETWEEN BUSINESS, CASUAL, AND COUNTLESS MUSICAL SUBCULTURES. HOW DO YOU LOOK PROFESSIONAL BUT STILL FIT IN WHEN IT COMES TO ATTENDING A CONFERENCE OR OTHER PROFESSIONAL EVENT? TO BE HONEST, THE ANSWER REALLY DEPENDS BECAUSE SOME EVENTS ARE MORE FORMAL THAN OTHERS AND MAY INCLUDE AWARDS DINNERS OR WALKS DOWN THE RED CARPET (NO, I'M NOT KIDDING). TODAY, WE'LL TAKE A LOOK AT WHAT TO WEAR TO YOUR AVERAGE MUSIC INDUSTRY CONFERENCE OR PROFESSIONAL EVENT AND WILL GET INTO SOME MORE SPECIFIC EXAMPLES IN THE FUTURE.



There is a certain outfit many often joke is the unofficial “music industry uniform.” It consists of business-casual style shoes (such as loafers for men or flats for women), jeans, a stylish shirt or even a t-shirt, and a blazer. This is the outfit you will most commonly see worn any just about any music event from a convention to an industry showcase. It is also the quintessential example of what the “music industry dress code” involves. It is some unique hybrid of casual, trendy, and business casual to create a style that is rather unique to the music world.



BERTA

Chairs / Sillas / Sedie

Negro mate



AGORA

Dining table / Mesa comedor / Tavolo da pranzo

Piel Azul Noche & Azul Noche Piano



Live your life like a rockstar

YOU SEE, THE LIFESTYLE OF A GUY WHO IS A “ROCKSTAR” IS A VERY, VERY INTERESTING ONE. A GUY WHO GOES THROUGH STRUGGLES AND VICTORIES, HIGH POINTS AND LOW POINTS, BUT STILL KEEPS PUSHING BECAUSE HE HAS A DREAM. CAUSE LET’S FACE IT, MOST GUYS WHO SAY THEY WANT TO BE A ROCK STAR, (OR A PROFESSIONAL ATHLETE OR WHATEVER “DREAM JOB” YOU MIGHT COME UP WITH) PEOPLE WILL SAY THEY ARE “DREAMING” OR “DELUSIONAL” OR THEY NEED TO “GET REAL.” BUT THEY DON’T LISTEN... THEY KEEP PUSHING AND PUSHING UNTIL THEY REACH THEIR ULTIMATE GOAL.

What most people don’t realize about being a “rockstar” is the amount of hard work, determination, and ambition that lies behind it. Having to not only make your music, but finding a way to get it out there so people can hear it, making contacts at different venues so they have somewhere to play live shows, selling tickets to the shows, finding someone to transport all of their gear, etc, etc. It’s not all gravy all the time. Before the fame and money... There was a ton of hard work and taking action.







THE PUREST AND MOST
THOUGHTFUL MINDS ARE
THOSE WHICH LOVE COLOUR
THE MOST.

Unlike red sometimes does, this intense color makes a statement without being brash. It turns a cozy sweater, notch-color coat, or swingy dress into something startlingly original. Designers have the blues for spring, if the colors coming down the runways are any indication. From icy shades (clearly someone was watching too much Frozen) to teal and turquoise, fans of the hue will have nearly every saturation possible. No wonder cobalt has edged out





GLOSS IS AN OPTICAL PROPERTY WHICH INDICATES HOW WELL A SURFACE REFLECTS LIGHT IN A SPECULAR (MIRROR-LIKE) DIRECTION. IT IS ONE OF IMPORTANT PARAMETERS THAT ARE USED TO DESCRIBE THE VISUAL APPEARANCE OF AN OBJECT. THE FACTORS THAT AFFECT GLOSS ARE THE REFRACTIVE INDEX OF THE MATERIAL, THE ANGLE OF INCIDENT LIGHT AND THE SURFACE TOPOGRAPHY.

Apparent gloss depends on the amount of specular reflection – light reflected from the surface in an equal amount and the symmetrical angle to the one of incoming light – in comparison with diffuse reflection – the amount of light scattered into other directions.



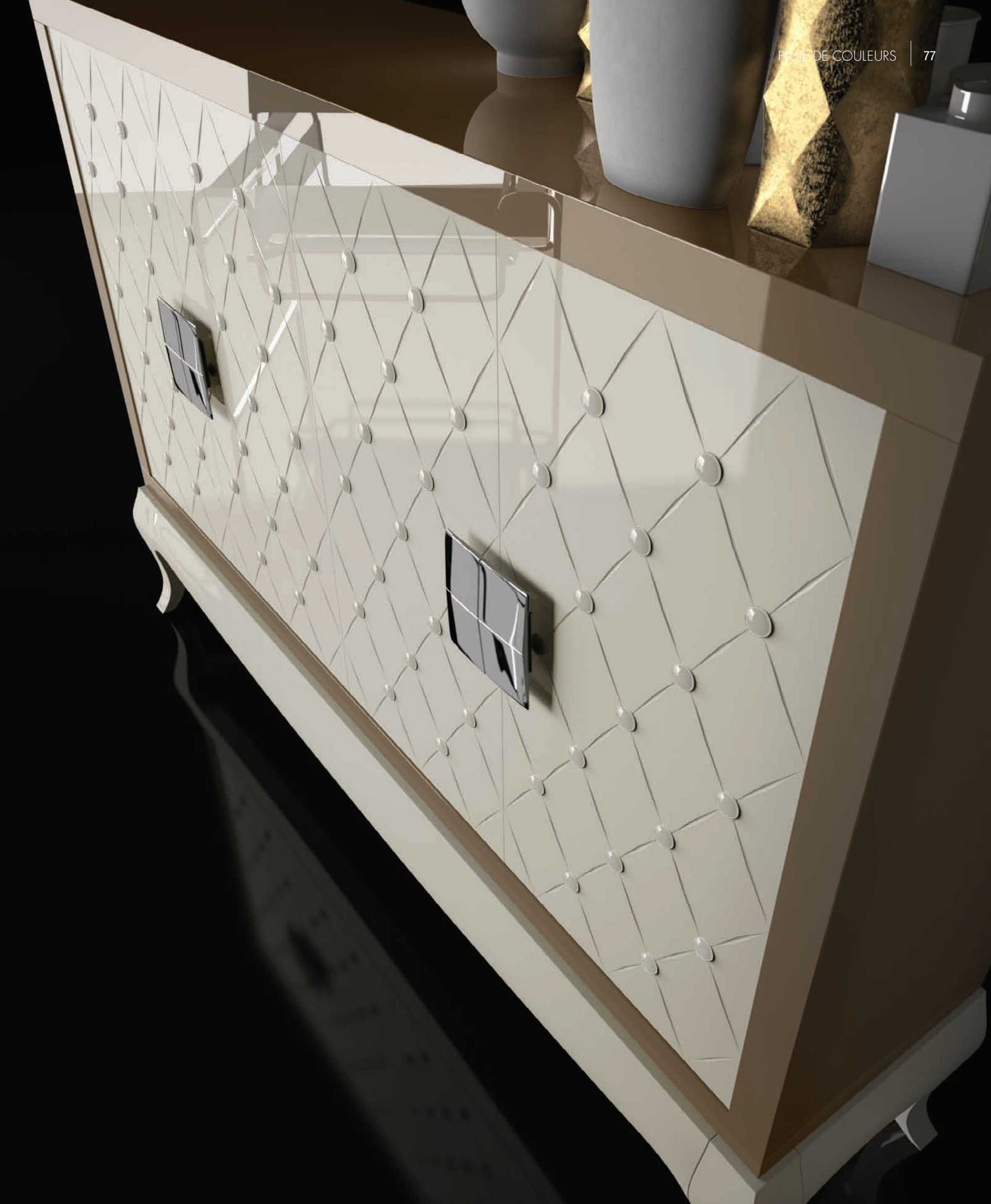




Luxury is in each detail.

Neoclassical design emerged in Europe in the 1750s, as the Age of Enlightenment reached full flower. Furniture took its cues from the styles of ancient Rome and Athens: symmetrical, ordered, dignified forms with such details as tapered and fluted chair and table legs, backrest finials and scrolled arms. Over a period of some 20 years, first in France and later in Britain, Neoclassical design — also known as Louis XVI, or Louis Seize — would supersede the lithe and curvaceous Rococo or Louis XV style.

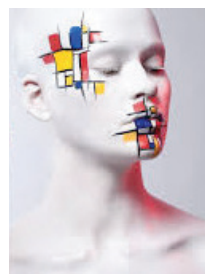
THE FIRST HALF OF THE 18TH CENTURY HAD SEEN A REBIRTH OF INTEREST IN CLASSICAL ANTIQUITY. THE “GRAND TOUR” OF EUROPE, CODIFIED AS A PART OF THE PROPER EDUCATION OF A PATRICIAN GENTLEMAN, INCLUDED AN EXTENDED VISIT TO ROME.





IN GEOMETRY, A CUBE IS A THREE-DIMENSIONAL SOLID OBJECT BOUNDED BY SIX SQUARE FACES, FACETS OR SIDES, WITH THREE MEETING AT EACH VERTEX.

The cube is the only regular hexahedron and is one of the five Platonic solids and has 12 edges, 6 faces and 8 vertices. The cube is also a square parallelepiped, an equilateral cuboid and a right rhombohedron. It is a regular square prism in three orientations, and a trigonal trapezohedron in four orientations. The cube is dual to the octahedron. It has cubical or octahedral symmetry.



Bring
your own
experience
into your
rooms



Home is the nicest
place there is.



CAPITONÉ

TV Composition / Composición TV / Composizione TV

Brownie Piano, Cappuccino Piano & Piel Moka

QUANTUM

Coffee table / Mesa de centro / Tavolo centrale

Brownie Piano & Cappuccino Piano

Cabinet / Vitrina / Vetrina

Curry Piano & Negro Piano



Colours are brighter when the mind is open



Art without measure



QUANTUM

Dining table / Mesa de comedor / Tavolo da pranzo

Smoke Piano & Rojo Piano

GIULIETTA

Chair / Silla / Sedie

Smoke Piano



Sideboard / Aparador / Credenza

Smoke Piano & Rojo Piano



When in
doubt, wear
RED



RESEMBLING A TWISTED TEARDROP, THE KIDNEY-SHAPED PAISLEY IS OF IRANIAN ORIGIN, BUT ITS WESTERN NAME DERIVES FROM THE TOWN OF PAISLEY, IN WEST SCOTLAND, A CENTRE FOR TEXTILES WHERE PAISLEY DESIGNS WERE PRODUCED.

Some design scholars believe it is the convergence of a stylized floral spray and a cypress tree: a Zoroastrian symbol of life and eternity. Paisley is the quintessential visual metaphor of Iran's bifurcated and tormented identity – riven between Arabic Islam and pre-Islamic Persian creeds. It is a bent cedar, and the cedar is the tree Zarathustra planted in paradise. The heavenly tree was “bent” under the weight of the Arab invasion and Muslim conquest of Persia.



Paisley passion.

The “bent” cedar is also the sign of strength and resistance but modesty. The floral motif was originated in the Sassanid Dynasty and later in the Safavid Dynasty of Persia (from 1501 to 1736), and was a major textile pattern in Iran during the Qajar and Pahlavi Dynasties. In these periods, the pattern was used to decorate royal regalia, crowns, and court garments, as well as textiles used by the general population.



TRIANGLE PAISLEY

Sideboard / Contenedor / Mobile contenitore

Adara mate & Nómada Piano - Midline Azul Spring Piano

Trust your instincts.



Indigenous Mexican art celebrates the skeleton and uses it as a regular motif. The use of skulls and skeletons in art originated before the Conquest: The Aztecs excelled in stone sculptures and created striking carvings of their gods. Coatlicue, the goddess of earth and death, was portrayed with a necklace of human hearts, hands and a skull pendant. She was imbued with the drama and grandeur necessary to dazzle the subject people and to convey the image of an implacable

state. The worship of death involved worship of life, while the skull – symbol of death – was a promise to resurrection. The Aztecs carved skulls in monoliths of lava, and made masks of obsidian and jade. Furthermore, the skull motif was used in decoration. They were molded on pots, traced on scrolls, woven into garments, and formalized into hieroglyphs.





Don't be
modern, be
timeless

Geometric patterns and shapes are often things we associate with decor and interior design, but these simple shapes and patterns have now been incorporated into a wide variety of fashion accessories and collections, illustrating the kind of popularity these geometric designs have had in modern day culture. From geometrically studded shoes to geometric-patterned dresses, these designs serve to add an intricate amount of detail to an otherwise ordinary outfit.

THESE SLEEK GEOMETRIC FASHION FINDS ARE SURE TO ATTRACT FASHIONISTAS LOOKING FOR THE NEXT BIG THING TO HIT THE RUNWAY, AND THESE DESIGNS WILL CONTINUE TO DOMINATE CLOTHING AND ACCESSORIES FOR A WHILE TO COME.









Sideboard / Aparador / Credenza

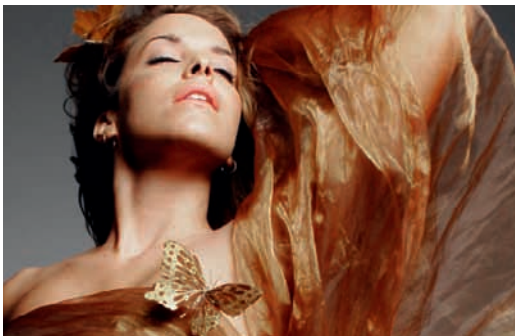
Piel Azul Noche & Azul Noche Piano



Bookcase / Biblioteca / Libreria

Crema mate

don't be afraid to show
your true colours



DOUBLE | Dining table / Mesa de comedor / Tavolo da pranzo | Piel Bombón & Brownie Piano | GIULIETTA | Chair / Silla / Sedie | Brownie Piano



Sideboards / Contenedores / Mobili contenitori | Cappuccino Piano & Crema Piano



The home
should be the
treasure chest
of living.





PERFECTO IS A BRAND OF “LANCER FRONTED” LEATHER MOTORCYCLE JACKETS DESIGNED BY IRVING SCHOTT AND MANUFACTURED BY AMERICAN CLOTHING COMPANY. THEY WERE WORN BY SUCH ICONS AS MARLON BRANDO IN THE 1953 SEMINAL MOVIE THE WILD ONE, BY PUNK ROCK PIONEERS THE RAMONES IN THE 1970S AND STYLED BY FASHION DESIGNERS SUCH AS JEAN PAUL GAULTIER IN THE 1980S. THE 613 AND 618



Perfectos have been produced for more than 50 years, so finding out when a vintage jacket was made can be difficult. There have, however, been slight variations in the design over time. Some of the details in the timeline below overlap. Style 118 is fitted with new chrome pocket zippers with different pulls (Schott recently switched back to the original chain zipper pulls) and a snap under the belt buckle to prevent it from damaging the gas tank. The side pockets on the 118 have supposedly been moved closer to the center of the jacket for easier access. The 613/618 have not been updated since the early 1990s.

i'll stop
wearing black
when they
make a darker
colour







SIXTY-NINE SOFT | Sideboard / Contenedor / Mobile contenitore | Adara mate & Roble soft | DOUBLE SOFT | Dining table / Mesa de comedor / Tavolo da pranzo | Roble soft | GINA | Chairs / Sillas / Sedie | Cobre



MURMUR | Dining table / Mesa de comedor / Tavolo da pranzo | Adara mate, Roble soft & Yellow Piano | GINA | Chairs / Sillas / Sedie | Cobre



COLOR MIXING IS NOT THE SORT OF THING THAT ANYONE IS BORN KNOWING HOW TO DO, BUT THAT'S A GOOD THING. IT'S NOT A TALENT. IT'S A SKILL.

And like any other skill, it can be learned. Here are six strategies to make it easier. It's pretty straightforward: pastels with pastels, earth tones with earth tones, jewel tones with jewel tones. When you're talking about colors, "complimentary" actually means "opposite." Black and white, for instance, are complimentary colors. That's why they look so great together. You know, "opposites attract." That whole thing.

Every color has a complimentary color. It's just whatever is on the opposite side of the color wheel. True complimentary colors are the same distance from the center of the wheel, but it can be very striking to combine a color from the center, like a pale yellow green, with its complimentary color from the outside edge, like a deep mauve.





Make it simple,
but significant.







Simplicity is the ultimate form of sophistication

Even though the Bauhaus school existed only for 14 years and closed 79 years ago, its influence is still felt today. Not only do you see Bauhaus influences in streets, interiors and furniture design, but also in the classroom where its teaching strategies are still commonly used. In fashion too, many designers are still inspired by the Bauhaus movement.

For those of you who have no clue what Bauhaus is: Bauhaus was a school in Germany that combined crafts and the fine arts, and was famous for its approach to design that it publicized and taught. One of the main objectives of the Bauhaus was to unify art, craft, and technology. The use of graphical shapes, different materials and colours are just some of the elements of designs inspired by Bauhaus.





Your place, your rules



OPALO

Armchair / Sillón / Sedia a braccioli

Berenjena Piano



AGORA

Desk / Mesa despacho / Tavolo da ufficio

Cappuccino Piano, Berenjena Piano & Piel Bombón



Colours speak
all languages.





Sideboards / Contenedores / Mobile contenitore

Piel Crema & Crema Piano - Little mouldings Azul Spring Piano & Azul Noche Piano



AGORA

Dining table / Mesa de comedor / Tavolo da pranzo

Piel Crema & Crema Piano

GIULIETTA XXL

Chairs / Sillas / Sedie

Crema Piano



ORGANIC

Sofa / Sofá / Divano



Sideboard / Aparador / Credenza

Piel Crema & Crema Piano - Little mouldings Azul Spring Piano & Azul Noche Piano



AMURA

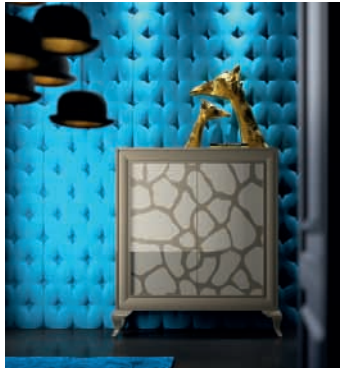
Mirror / Espejo / Specchio

Azul Noche Piano





P. 003



P. 005



P. 007



P. 009



P. 011



P. 061



P. 063



P. 065



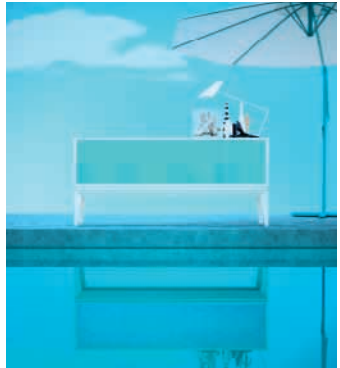
P. 069



P. 071



P. 013



P. 017



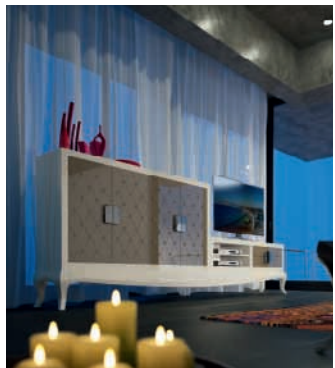
P. 018



P. 021



P. 023



P. 073



P. 075



P. 079



P. 081



P. 085



P. 025



P. 027



P. 031



P. 033



P. 035



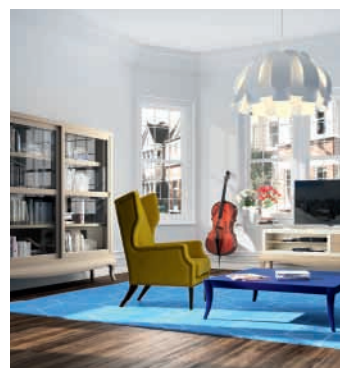
P. 089



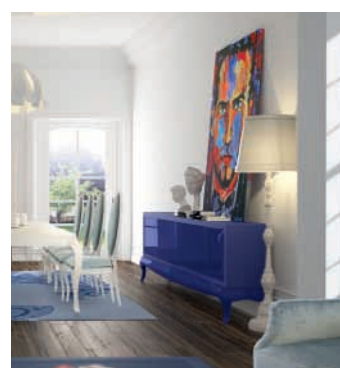
P. 091



P. 093



P. 095



P. 097



P. 037



P. 039



P. 041



P. 043



P. 045



P. 101



P. 103



P. 105



P. 107



P. 109



P. 051



P. 053



P. 055



P. 057



P. 059



P. 113



P. 115



P. 117



P. 119



P. 127



Thank you letter.

I am extremely grateful to all the people who have collaborated on the edition of this catalogue. And I'd like to give a special mention to my sister Susana, for her critical eye and thorough reviews; to Sergio, for his attitude and endurance; to Lourdes, who is always so meticulous and persistent; to Carmelo, for the passion that he demonstrates for typography and photography; to Alberto, for his desire to improve and to my brother Roberto, for the hours of deprived sleep that I have taken away from him with the of new designs.

I HOPE YOU ENJOY IT!



Laebanistería
be at home, since 1968